





## Health and Social Care Integration Pioneers: Leeds

**Our Vision:**  
Leeds will be a healthy and caring city for all ages, where people who are the poorest will improve their health the fastest  
Leeds JHWS 2013




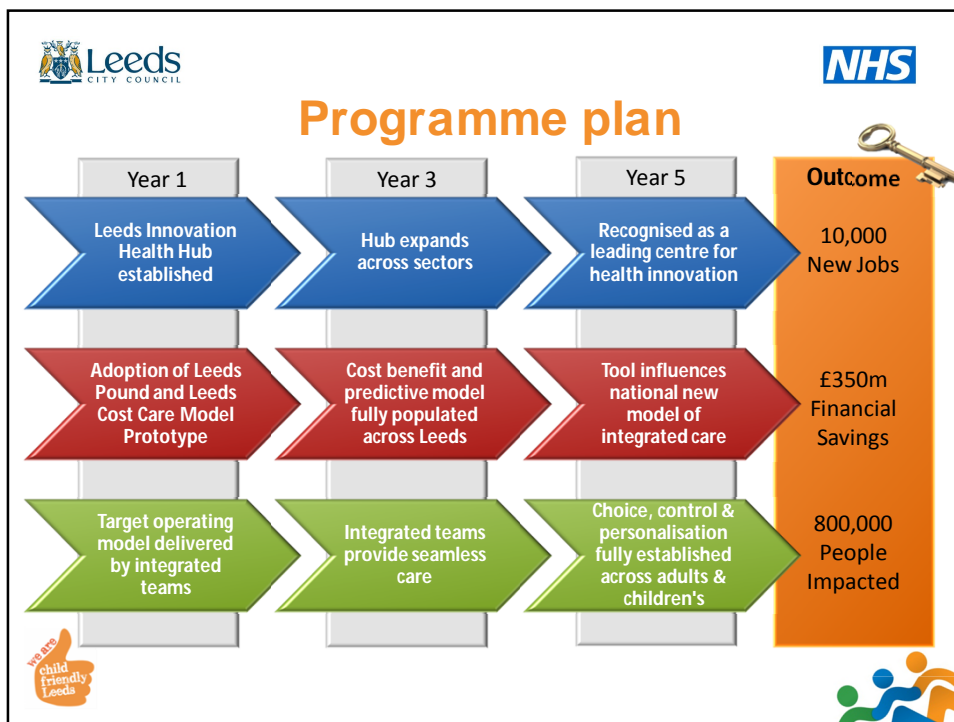
 

## Aims and objectives



Improving quality of experience:  
Innovate - Commission - Deliver







## Impact on the care of individuals

There are no gaps in my care

I want to do the same as everyone else, and only have to talk to one person

I didn't have to wait in all day for lots of different people to come at different times

I am fully involved in the decisions and know what is in my care plan

*"My care is planned with people who work together to understand me and my carer(s), put me in control, co-ordinate and deliver services to achieve my best outcomes"*



It is less time consuming if all services are together in one place

The team always talk to each other to get the best care for my son

I always knew who was in charge of my care and who to contact

I don't have to keep repeating myself to lots of different people






## Measuring success



Evolutive



Care Trak



Outcomes Framework




**Leeds** CITY COUNCIL **NHS**

## Working together with impact

Interface Geriatrician  
Early Start  
South Leeds Independence Centre  
Single Point of Urgent Referral / Contact  
Information Governance/ Care Records  
Neighbourhood Networks  
Neighbourhood Integrated Teams  
Leeds Directory

**We are child friendly Leeds**

**Leeds** CITY COUNCIL **NHS**

## Contextual factors

population, patients, carers, families, communities  
Academic institutions and Third sector  
Leeds Unique Assets  
Local government  
Private sector  
Local health and social care commissioning and delivery organisations  
National bodies headquartered in Leeds

**We are child friendly Leeds**